

062640

RECEIVED
LARAMIE COUNTY

East 1/4 corner Section 29 T18N R65W CHEYENNE, WY.

CERTIFIED LAND CORNER RECORDATION, 89 OCT 5 PM 3 01

DESCRIPTION OF CORNER EVIDENCE FOUND, AND ORIGINAL RECORD (If known)

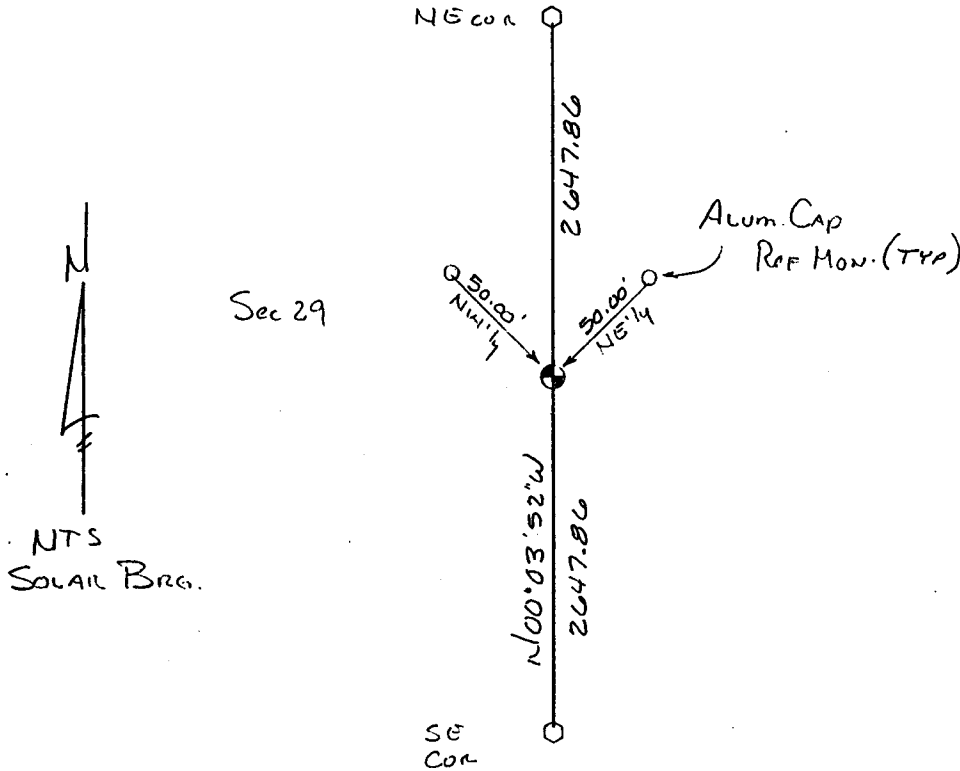
No evidence of the original corner or any resurvey was found. The original GLO call was for a 18x16x2 limestone. The corner was considered lost and reset by single prorate method.

DESCRIPTION OF MONUMENT AND ACCESSORIES ESTABLISHED TO PERPETUATE THE ORIGINAL LOCATION OF THIS CORNER:

Set a 30" long No5 rebar with a Corps of Engineers Brass Cap at the prorate location of the corner. Set No4 rebar with Alum cap REF MON as shown in the sketch.

AUG 24 1989

SKETCH, WITH COURSE AND DISTANCE TO ADJACENT CORNER IF DETERMINED IN THIS SURVEY. (May Sketch or Paste Reproduction on Reverse Side.)



I, Wallace C. Muscott certify that I have carefully performed or reviewed the work done on the diagrammed corner as reported on this recordation form and approve the same.

Wallace C. Muscott 3830
Signature of Surveyor Registration No.

STATE OF WYOMING,
Office of Clerk and Recorder,
County of _____

This "corner record" was filed for record on the _____ day of _____, 19____, was noted on the cross-index plat and is assigned page No. _____, in book No. _____.

Cross Index No.	County Official			Mer.
	T. 18N	R. 65W	6th	
T 9	_____	_____	_____	Mer.
_____	_____	_____	_____	Mer.
_____	_____	_____	_____	Mer.
_____	_____	_____	_____	Mer.
_____	_____	_____	_____	Mer.
_____	_____	_____	_____	Mer.
_____	_____	_____	_____	Mer.